



# RP20

## ROBOTIC DISPENSING SYSTEM

  
CAPSAHEALTHCARE

Central Filling  
Mail Order/Digital Pharmacy  
Pharmaceutical Wholesale  
Hospital Pharmacy  
Retail Pharmacy

  
Automation by  
Capsa Healthcare

# RP20 Operation

Simple, Fast, Efficient, Expandable



## 1 Medication Dispensing

Near-instantaneous dispensing of packaged medications from ingenious gravity-fed channels; all medications for one patient or order are queued simultaneously.



## 2 Fast Transport

Medications fall in a batch softly onto the conveyor below, for fast transit to our custom-designed elevator/conveyor system that brings all medications for one patient or order to the verification-labeling station. (Shown: RP20 with slow-mover door)



## 3 Verification & Labeling

At the RoboLabel station, technicians retrieve all medications in the batch; Verify via barcode scan; a package label auto-prints; the technician applies to each package in seconds.



## 4 Replenishment

Completed while the RP20 robot is in operation. Technician uses a hand-scanner to verify medication packages, then loads channels. Software alerts the pharmacy technician to low par levels for each channel, and barcode scan-verification prevents mis-stocking errors.



## 5 Slow-Mover Door (optional)

Add a slow-mover door to any RP20 system to accommodate slower-moving SKUs. Slow-mover channels are 300mm in length (versus standard channel 1,200mm length).



## 6 Expand As Your Volume Grows

Add robotic dispensers in a small amount of space to dramatically increase storage and dispensing capacity. Our engineers handle the design, layout, and conveyor connectivity for a well-organized workflow.



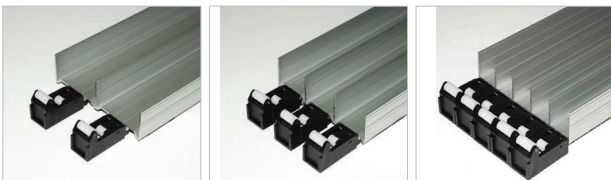
# RP20 High Volume Dispensing



## Fast, compact dispensing for any size and quantity boxed/unit of use medication packaging

The heart of a RoboPharma pharmacy automation system is our unique RP20 robot with channel dispenser technology. Operation of this system is based on gravity and proven technology to move fast-moving medication packets without the noise, energy demand, and cost of upkeep that you typically find with complex robot picking.

Each RP20 is ingeniously spacious with a capacity of 12,600 to 18,900 medication packs per robot; every square cm is maximized.



*Our Medication Dispensing Channels are 1- to 5-wide to accommodate almost any medication package size. Each unit is compact, from 2 square meters, and can be swapped quickly.*



*Channel dispensing benefits include low power usage, quiet operation, and no downtime. Full access to stock is available even in a power failure or scheduled maintenance.*



*Technical lifecycle of a channel system is 15+ years*



*International Markets: RP20 dispensing can automate up to 90% of all orders*

*North America Markets: Can automate most unit-of-use meds, or up to 20% of total orders*



*In the highest volume systems, space-saving storage is essential. RoboPharma's unique FastMover Channels are vertical to take advantage of deep stacking.*



*Also available: Automate the dispenser replenishment process with AutoFill, an advanced high-speed system to restock bulk medication packages.*

# The Global Innovator In Central Filling/Mail Order & Retail Pharmacy Automation



## Our simplified approach for a complex industry

Capsa Healthcare's RoboPharma technology is the industry leader for central filling/mail order and retail/hospital dispensing automation. We got there because we deliver effective automation, simply! We develop a comprehensive project plan that emphasizes speed and uptime, while maximizing every meter of your available space. Maximum efficiency, productivity, and accuracy. Those are the signature results of RoboPharma engineering.

Benefit	Every RoboPharma Design Delivers
<b>Speed</b>	Unmatched by any other robotic processing system
<b>Deep Savings</b>	In labor, energy, and time
<b>Exacting Precision</b>	Assurance that every order is correct
<b>Space Utilization</b>	Every m <sup>2</sup> used efficiently in your available space
<b>Customization Build</b>	To suit your business plan, easily expandable in the future as your business grows



### Cost Reduction

- FTE reduction/savings
- Stock reduction
- Smaller shop footprint for same dispensing volume



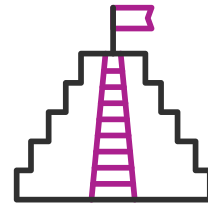
### Quality Improvement

- <1 error in 1m scripts
- Eliminate error-prone manual dispensing of unit-of-use packaging
- Automate a greater percent of total orders



### Manageability

- Multiple data points to manage medication inventory
- Customizable dashboards
- Interfaces to any existing system, or build a new site around the RP20 capabilities



### Ready For The Future

- Add any number of RP20 robots to accommodate growth
- Modular design
- Different width channels can be swapped quickly for different stock sizes

#### International Inquiries

Sales@RoboPharma.com  
+31 (0)416 34 71 72  
Waalwijk, The Netherlands

#### North America Inquiries

Info@CapsaHealthcare.com  
800.437.6633  
Columbus, Ohio, USA



Watch Video



Certified  
ISO27001:2013



Certified  
ISO9001:2015

↑ RoboPharma is pharmacy automation by Capsa Healthcare



Specifications, availability and components are subject to change without notice.

© Capsa Healthcare, 2023 Form C-911