

T4

TouchPoint™
Mobile Technology Cart

Product Line Brochure



Humanscale® | Better Design,
HEALTHCARE | Better Care

“Better Design, Better Care”

Humanscale Healthcare is the global leader in next generation point-of-care solutions that advance caregiver and patient safety, engagement, and satisfaction.

Our mission is to develop innovative, best-in-class solutions that help healthcare providers adopt new technology in the pursuit of better patient care and improved clinical workflows. Our products reduce the physical and cognitive workload on caregivers, allowing them more time to focus on the patient.

T4 Mobile Technology Cart

In response to the evolving needs of hospitals and healthcare environments Humanscale Healthcare has developed the T4 Mobile Technology Cart product line. Part of the TouchPoint family, the T4 Cart is a cost effective, versatile and durable solution that can be deployed as a traditional point of care workstation as well as being suited for patient-facing applications such as video communication.



Solutions

The T4 Cart can be configured for a range of technology devices including laptops, tablets and All-in-One PCs depending on the required solution. With minimal component parts, the product has been developed with rapid deployment in mind, requiring minimal on-site assembly.

The modular nature of the product means that as needs change over time, the T4 Cart can be reconfigured and redeployed in different areas and for different applications based on demand. Reconfiguration is possible using simple hand tools, reducing the need to bring specialist technicians on-site.



Touchdown Cart

Product shown:
T4SSNWS



Laptop Charting Cart

Product shown:
T4SLSWS



Patient Communication Cart
with Post Mount

Product shown:
T4SPS01



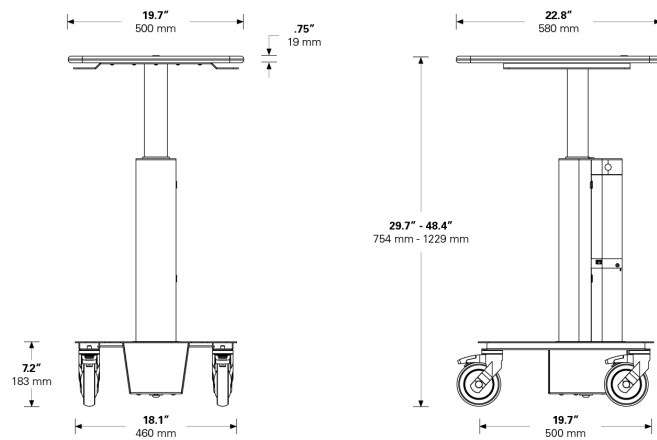
Patient Communication Cart
with Arm Mount

Product shown:
T4SPS03

(IT equipment is not included with displayed configurations.)

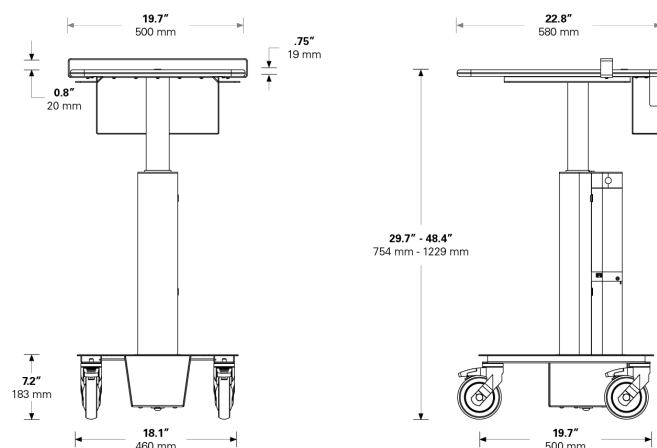
Technical Information

Touchdown Cart



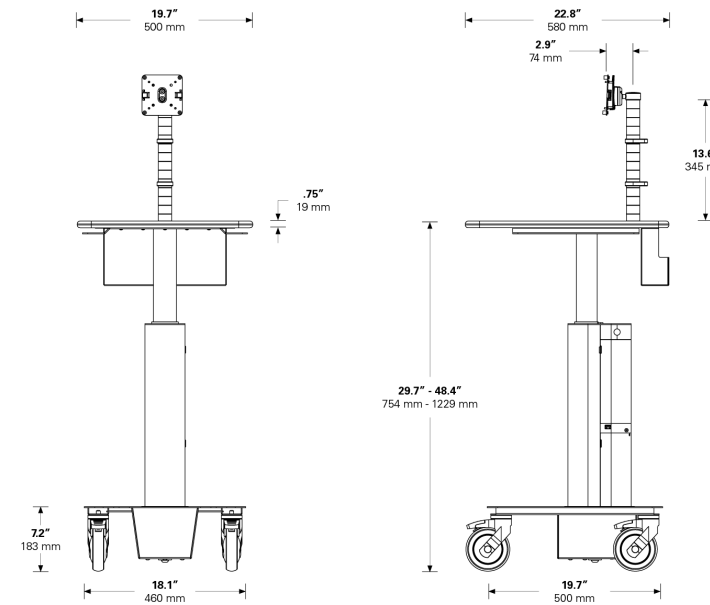
- Cart height adjustment range: 18.7" (475mm)
 - Minimum height: 29.7" (754mm)
 - Maximum height: 48.4" (1229mm)
- Work surface dimensions:
L: 22.8" (580mm) x W: 19.7" (500mm) x H: 0.75" (19mm)
- Base dimensions:
L: 19.7" (500mm) x W: 18.1" (460mm) x H: 7.2" (183mm)
- Cart weight: 62.8lb (28.5kg)
- Maximum technology weight: 31.5lb (14.2kg)
- Caster size: 5" (127mm)
- Warranty: 5 years

Laptop Charting Cart



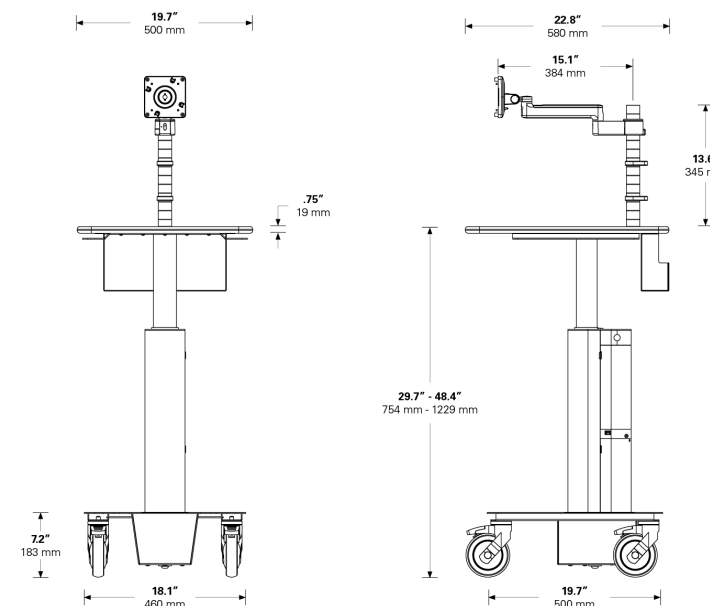
- Cart height adjustment range: 18.7" (475mm)
 - Minimum height: 29.7" (754mm)
 - Maximum height: 48.4" (1229mm)
- Work surface dimensions:
L: 22.8" (580mm) x W: 19.7" (500mm) x H: 0.75" (19mm)
- Base dimensions:
L: 19.7" (500mm) x W: 18.1" (460mm) x H: 7.2" (183mm)
- Cart weight: 63.6lb (28.8kg)
- Maximum technology weight: 30.7lb (13.9kg)
- Cable basket internal dimensions:
L: 3" (77mm) x W: 13.7" (348mm) x H: 6.4" (163mm)
- Caster size: 5" (127mm)
- Warranty: 5 years

Patient Communication Cart with Post Mount



- Cart height adjustment range: 18.7" (475mm)
 - Minimum height: 29.7" (754mm)
 - Maximum height: 48.4" (1229mm)
- Work surface dimensions:
L: 22.8" (580mm) x W: 19.7" (500mm) x H: 0.75" (19mm)
- Base dimensions:
L: 19.7" (500mm) x W: 18.1" (460mm) x H: 7.2" (183mm)
- Technology mounting height: 14.1" (357mm)
- Cart weight: 64.6lb (29.3kg)
- Maximum technology weight: 27.3lb (12.3kg)
- Cable basket internal dimensions:
L: 3" (77mm) x W: 13.7" (348mm) x H: 6.4" (163mm)
- 100x100mm and 75x75mm VESA mount
- Caster size: 5" (127mm)
- Warranty: 5 years

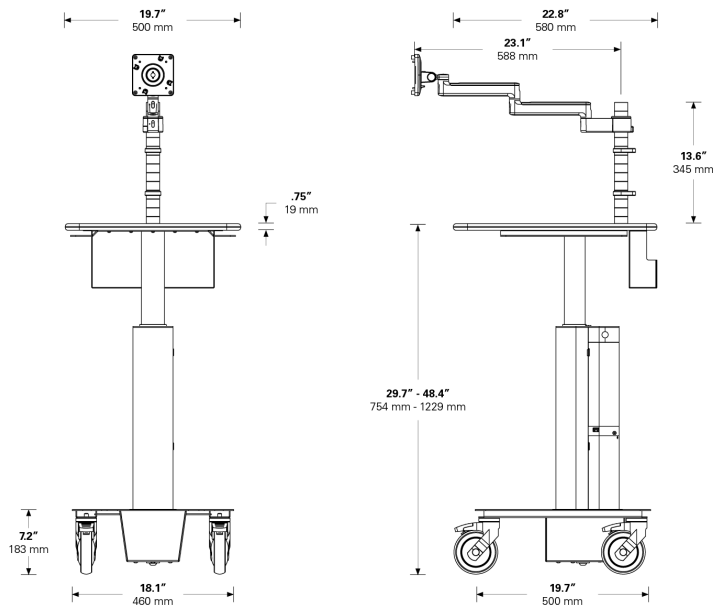
Patient Communication Cart with Arm Mount - Single Straight Link



- Cart height adjustment range: 18.7" (475mm)
 - Minimum height: 29.7" (754mm)
 - Maximum height: 48.4" (1229mm)
- Work surface dimensions:
L: 22.8" (580mm) x W: 19.7" (500mm) x H: 0.75" (19mm)
- Base dimensions:
L: 19.7" (500mm) x W: 18.1" (460mm) x H: 7.2" (183mm)
- Technology mounting post height: 13.6" (345mm)
- Technology mounting height: Adjustable along the post
- Cart weight: 67.9lbs (30.8kg)
- Maximum technology weight mounted on arm: 15.5lb (7kg)
- Arm reach (From the center of the post): 15.1" (384 mm)
- Cable basket internal dimensions:
L: 3" (77mm) x W: 13.7" (348mm) x H: 6.4" (163mm)
- 100x100mm and 75x75mm VESA mount
- Caster size: 5" (127mm)
- Warranty: 5 years

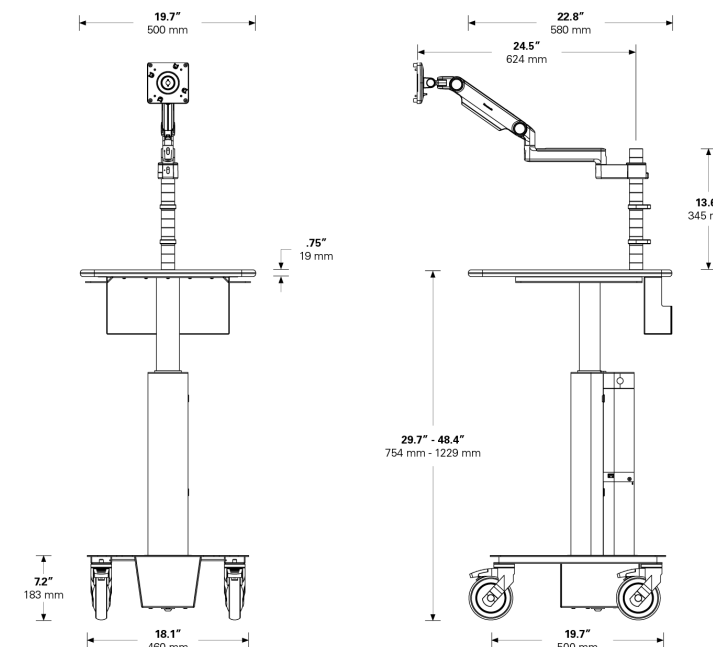
Technical Information (continued)

Patient Communication Cart with Arm Mount - Double Straight Link



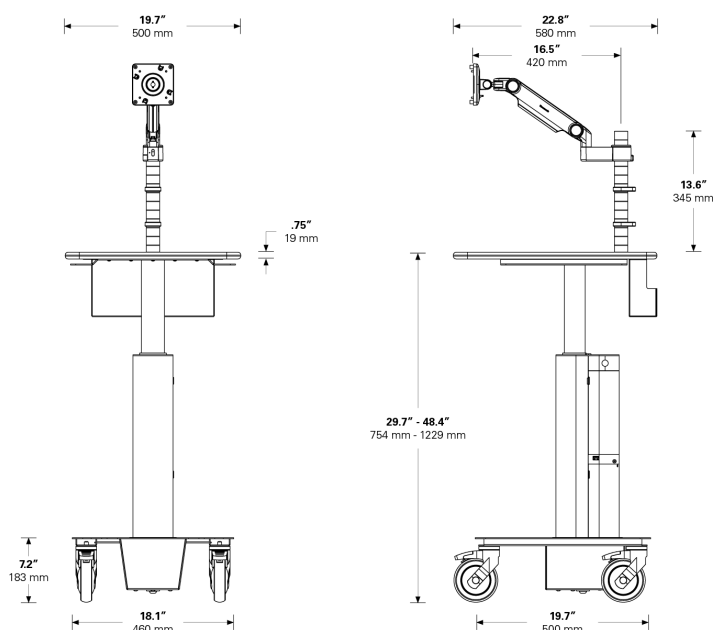
- Cart height adjustment range: 18.7" (475mm)
 - Minimum height: 29.7" (754mm)
 - Maximum height: 48.4" (1229mm)
- Work surface dimensions:
L: 22.8" (580mm) x W: 19.7" (500mm) x H: 0.75" (19mm)
- Base dimensions:
L: 19.7" (500mm) x W: 18.1" (460mm) x H: 7.2" (183mm)
- Technology mounting post height: 13.6" (345mm)
- Technology mounting height: Adjustable along the post
- Cart weight: 68.8lbs (31.2kg)
- Maximum technology weight mounted on arms: 15.5lb (7kg)
- Arm reach (From the center of post): 23.1" (588mm)
- Cable basket internal dimensions:
L: 3" (77mm) x W: 13.7" (348mm) x H: 6.4" (163mm)
- 100x100mm and 75x75mm VESA mount
- Caster size: 5" (127mm)
- Warranty: 5 years

Patient Communication Cart with Arm Mount - Straight Link & Dynamic Link



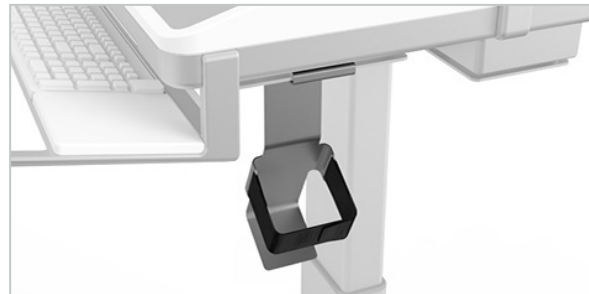
- Cart height adjustment range: 18.7" (475mm)
 - Minimum height: 29.7" (754mm)
 - Maximum height: 48.4" (1229mm)
- Work surface dimensions:
L: 22.8" (580mm) x W: 19.7" (500mm) x H: 0.75" (19mm)
- Base dimensions:
L: 19.7" (500mm) x W: 18.1" (460mm) x H: 7.2" (183mm)
- Technology mounting post height: 13.6" (345mm)
- Technology mounting height: Adjustable along the post
- Dynamic arm height adjustment range: 10.4" (264mm)
- Cart weight: 69.9lb (31.8kg)
- Maximum technology weight mounted on arms: 15.5lb (7kg)
- Arm reach (From the center of post): 24.5" (624 mm)
- Cable basket internal dimensions:
L: 3" (77mm) x W: 13.7" (348mm) x H: 6.4" (163mm)
- 100x100mm and 75x75mm VESA mount
- Caster size: 5" (127mm)
- Warranty: 5 years

Patient Communication Cart with Arm Mount - Single Dynamic Link



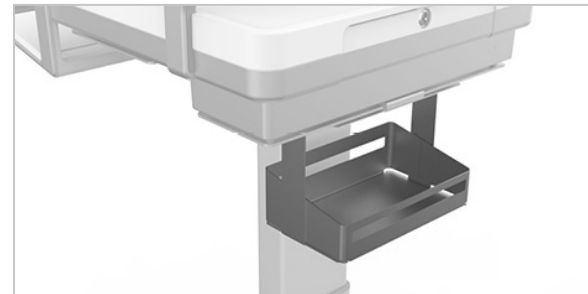
- Cart height adjustment range: 18.7" (475mm)
 - Minimum height: 29.7" (754mm)
 - Maximum height: 48.4" (1229mm)
- Work surface dimensions:
L: 22.8" (580mm) x W: 19.7" (500mm) x H: 0.75" (19mm)
- Base dimensions:
L: 19.7" (500mm) x W: 18.1" (460mm) x H: 7.2" (183mm)
- Technology mounting post height: 13.6" (345mm)
- Technology mounting height: Adjustable along the post
- Dynamic arm height adjustment range: 10.4" (264mm)
- Cart weight: 69lbs (31.3kg)
- Maximum technology weight mounted on arm: 15.5lb (7kg)
- Arm reach (From the center of post): 16.5" (420 mm)
- Cable basket internal dimensions:
L: 3" (77mm) x W: 13.7" (348mm) x H: 6.4" (163mm)
- 100x100mm and 75x75mm VESA mount
- Caster size: 5" (127mm)
- Warranty: 5 years

Accessories



Sharps Container

Accommodates 1 quart sharp container



Utility Basket

Inner Dimensions (D x W x H):
10.30" x 11.80" x 3.80" (264mm x 302mm x 98mm)



Universal Scanner Bracket

Inner Dimensions (W x H):
3.2" x 2.5" (81mm x 63mm)



Glove Box Holder

Inner Dimensions (D x W x H):
4.2" x 5.2" x 9.8" (106mm x 132mm x 248mm)

Cleaning Instructions

The following Cleaning Agents and Chemical Compounds were tested and approved to have contact with the exterior surfaces of T4 Mobile Technology Cart excluding the work surface. (Cleaning Agent and Chemical Compound compatibility for the work surface is pending testing, due to be completed by October 2020.)

Cleaning Agents

- Quaternary Ammonium Compound Disinfectant (Used to disinfect medical devices)
- Simple green all-purpose cleaner (concentrated)
- Bacillol 25 (Bacillol AF/Bacillol 30 Equivalent Alcohol based cleaning agent)
- Mikrobac Forte (Indicine Equivalent and 3rd generation QAC)
- Bacillocid Extra (Formaldehyde based cleaning agents)

Chemical Compounds

- Isopropyl Alcohol (99% or greater concentration)
- Betadine (10% Povidone-Iodine solution)
- Coffee (solution)
- Cola (solution)
- Dextrose (5% Glucose solution)
- HCl (0.5% solution, pH=1)
- Hydrogen Peroxide (6% solution)
- NaCl Solution (0.9% solution)
- Electrode Gel (98% water, 2% Carbopol 940 solution)

Chemical Compounds

- Always unplug the cart and power it down before cleaning.
- Never clean the cart with steel wool or other abrasive materials that will damage the surface finish.
- Do not rub a wet or damp cloth over any electrical components.
- Do not immerse the cart or its components in liquid or allow liquids to flow into internal compartments or over any electrical components.
- Thoroughly dry all surfaces after cleaning.
- Do not use flammable cleaners on cart surfaces due to close proximity of electrical power and equipment.
- It is recommended that any cleaning solution be tested on a small, inconspicuous area to ensure surface is not harmed.



Humanscale Healthcare Customer Support

Americas

+1 800 400 0625, Option 4
horders@humanscale.com

International

+1 303 858 9912, Option 4
intlhorders@humanscale.com

humanscalehealthcare.com